



Neither frozen nor forgotten: heritage is meant to be shared

Join us on a journey to the heart of local stories, skills, and passions.

In the Aube region of Champagne, heritage doesn't gather dust... it always has a story to tell! Along the roads, you'll discover castles, museums brimming with history, churches with remarkable stained-glass windows, and those famous half-timbered houses that give the towns and villages their distinctive character. And then there are the skills, patiently passed down, that shape the soul and character of this region.



EXCURSION

Through the centuries, the stained glass tells a story...

Distance: The entire program is based in Troyes.

Availability: All year round except Mondays.

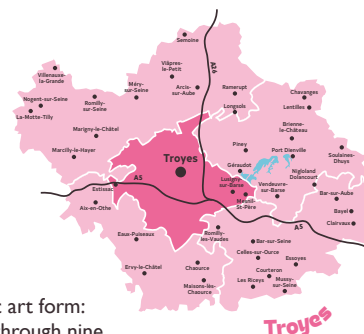
From 63€* per person – transport not included

*Price based on a group of 25 people, subject to change

✦ The day immerses you in the history of Troyes through an iconic art form: **stained glass**. A guided tour of the historic centre takes you through nine centuries of creation, from the grand Gothic windows of **the Cathedral of Saint Peter and Saint Paul** to the more modern compositions of **the Basilica of Saint Urban**.

✦ Just a stone's throw away, the **Cellier Saint-Pierre** welcomes you for a guided tour of its artisanal distillery and a **tasting of Prunelle de Troyes**, a local specialty.

✦ After lunch, the day continues with a **guided tour of the Cité du Vitrail** (Stained Glass Museum), housed in the former Hôtel-Dieu-le-Comte. This is an opportunity to explore the world of stained glass in all its facets: history, techniques, ancient masterpieces, and contemporary creations. The day concludes with a **self-guided exploration of the colourful and remarkably well-preserved 18th-century Apothecary**.



EXCURSION

A Journey Through Molding and Mounting

Distance: 20.5 km

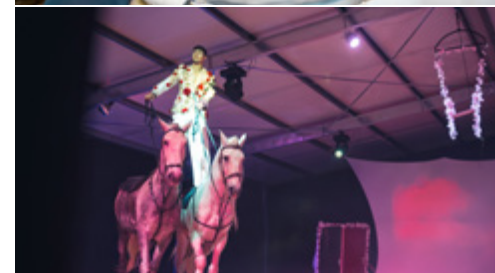
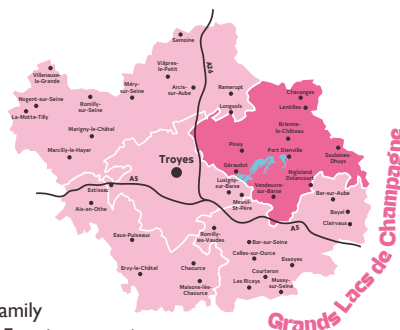
Availability: Select Sundays or school holidays

From 68€* per person – transport not included

*Price based on a group of 25 people, subject to change

✦ Welcome to **the Royer Tile and Pottery Works**, a family business rewarded the Entreprise du Patrimoine Vivant label. For six generations, the Royer family has been passionately shaping the clay of the Aube region, **transforming it into tiles**, bricks, and pottery using time-honored techniques. In the 100 m³ wood-fired kiln, over nine days of firing, the fire transforms the raw clay into durable materials, ready to last for centuries.

✦ After a delicious lunch featuring local flavours, step inside the **Champagne Equestrian Theatre** to discover what goes on **behind the scenes**. From the stables to the stage, you'll witness the artists and their horses preparing, a moment of intense focus and camaraderie. Then, **let the show begin!** Be swept away by a performance that blends emotion and equestrian prowess.





EXCURSION

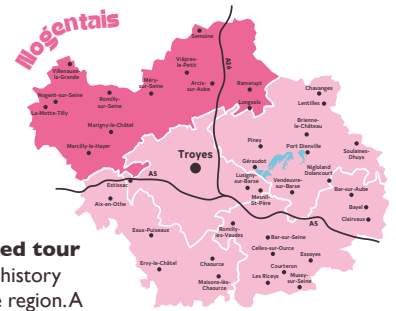
From Clay to Needle Heritage Trail

Distance: 24.8 km

Availability: Monday to Friday

From 34€* per person – transport not included

*Price based on a group of 25 people, subject to change



✦ The day begins in **Villenauxe-la-Grande** with a **guided tour of the Heritage Centre**. The ecomuseum retraces the history of clay mining and ceramics, two crafts that have shaped the region. A short walk away, **the Church of Saint Peter and Saint Paul** surprises visitors with its contemporary stained-glass windows by renowned British artist David Tremlett.

✦ After a local lunch, we'll head to **Romilly-sur-Seine**, once a major centre of French hosiery. At the **Espace Vivant de la Bonneterie** (Living Hosiery Museum), you'll discover the crafts that made the town famous, earning it the nickname «Romilly of the socks.» Winding machines, hosiery machines, elastic knitting: the machines come back to life with explanations from volunteers (you'll also see the world's largest sock, a Guinness World Record holder!). There, former candlemakers will share with you the secrets of an ancient craft: candle making.

SHORT BREAK

Following in the footsteps of the Aube region's history in Champagne

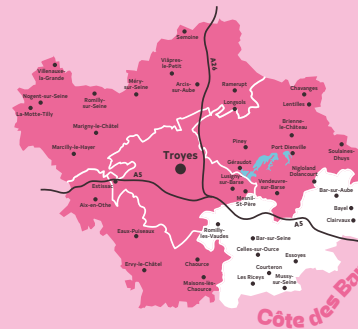
Duration: 2 days / 1 night

Distance: 130 km

Availability: All year round

From 270€* per person – transport not included

*Price based on a group of 25 people, subject to change



Day 1

The trip begins at the **Aube Resistance Museum**, which recounts the battles and experiences of the Aube Resistance fighters during the Second World War.

After a traditional lunch, head to the **Commandery of Avenay** for a guided tour of its living quarters and Templar chapel.

The day concludes at the **Château de Vaux**, with a timeless visit through its restored rooms. Traditional games and fun investigations enhance the experience. Check into your 3-star hotel with a swimming pool and spa.

Day 2

Discover a half-timbered church, simply constructed of wood and wattle and daub (like the village houses), typical in the damp Champagne region.

The day continues with a **tasting of three different Champagne vintages** in a Cistercian cellar.

Finally, you have lunch in **the heart of Clairvaux Abbey**, before discovering its unique history: that of the voluntary confinement of the Cistercian monks, who lived there for almost 7 centuries, and then that of the forced confinement of the prisoners until 2023.



A question, a quote request?

Contact Estelle Mazard, coordinator of the Aube Destination Management Club.
T. +33 (0)3 25 42 50 83 / +33 (0)6 76 39 41 58 - estelle.mazard@aube.fr

More information here:

www.groupes.aube-champagne.com

aube
EN CHAMPAGNE